

2019 Oncology Annual Report



Lexington Medical
Cancer Center

DukeHealth AFFILIATE

2019 Cancer Committee Membership

CHAIR:

Quillin Davis, MD, Radiation Medicine, Medical Director of Oncology Services

VICE CHAIR:

Steve A, Madden, MD, Medical Oncology/Medical Executive Committee Representative

CANCER LIAISON PHYSICIAN:

Ronald G. Myatich, MD, FACS, Surgery

Quillin Davis, MD..... Radiation Medicine, Medical Director of Oncology Services
Steve A. Madden, MD..... Medical Oncology, Medical Executive Committee Representative
Jayne Moffatt, MD.....Pathology
Ronald G. Myatich, MD, FACSSurgery
Beth Sirotty-Smith, MD Radiology
Theresa Altman, RN, MSN, NE-BC Oncology Nursing
Natalie J. Copeland, RHIA, CTR..... Cancer Registry/Cancer Tumor Registry
Linda Sherriff, Director Clinical Research
Stephanie Fulmer, LMSW..... Psychosocial Services and Social Work
Whitney Dobek, MS, CGC Genetics Counselor
Cindi Reimer, RN..... Discharge Planning Palliative Care Case Manager
Thomas Tafel, MPH..... Community Outreach
Natasha Stoudemire, RN, BSNCancer Programs Manager
Jessica Davis, RN, BSN.....Manager, Population Health, Clinical Integration
Kim Branham, RN (Interim) Clinical Oncology Nursing
Jon BridgesOperations Director, Physician Network Services, Outpatient Oncology
Ashley Cashon.....Health Systems Manager, Hospitals, American Cancer Society
John Ezekiel, PharmD, BCOP Manager, Outpatient Oncology Pharmacy
Tori Gude, MPT, DPT, CLT..... Physical Therapy
Wes Harden, Director..... Radiology/Imaging Services
Claudine Jordan, BS RT, (R)(T)Radiation Medicine
Sidney Kohn, RN, DirectorNursing/Inpatient Services, Medical/Surgical
Donna Peele Chaplaincy
Samantha Schmidt, PharmD.....Inpatient Clinical Oncology Pharmacy
Melissa Taylor, RN, MSN, NEA-BC..... Chief Nursing Officer/Administration,
Patient Care Services
Jennifer Wilson.....Marketing
Ann Bethea Wingate..... Volunteer Services

PROGRAM ACTIVITY COORDINATORS

Quillin Davis, MD..... Cancer Conferences
Natalie Copeland..... Cancer Registry Quality
Jessica Davis Quality Improvement
Stephanie FulmerPsychosocial Services
Linda Sherriff..... Clinical Research
Thomas Tafel..... Community Outreach

A Message from Ronald G. Myatich, MD, FACS

CANCER LIAISON PHYSICIAN

Cancer treatment programs at Lexington Medical Center have had another successful year, reaching multiple significant milestones throughout our treatment network.

BREAST CANCER PROGRAM

Our breast cancer program underwent a triannual recertification survey by the National Accreditation Program for Breast Centers and the American College of Surgeons and received Certification with Commendation. This accomplishment was the result of the hard work of countless cancer treatment professionals working together in a multidisciplinary effort to optimize breast cancer care at Lexington Medical Center.

Additionally, our breast cancer program launched the “Campaign for Clarity” with a goal of providing 3-D mammography throughout our entire health care network. This program augments current efforts to provide additional breast cancer screening opportunities to underserved populations of the Midlands with a goal of reducing advanced stage III and IV breast cancers.

OUTPATIENT CANCER CARE

Outpatient cancer care at Lexington Medical Center has been enhanced with a community education event about cervical cancer, which is planned for spring of 2020, and patient education materials that now include an easy-to-understand

glossary to help family members negotiate medical jargon often accompanying cancer treatment. Outpatient cancer treatment at Lexington Medical Center has also improved with the addition of a second PET scanner at our newly renovated Lexington Oncology facility on our main campus. Development and implementation of more efficient chemotherapy protocols at Lexington Medical Center have resulted in saving more than \$250,000 this year alone.

INPATIENT CANCER TREATMENT

Inpatient cancer treatment at Lexington Medical Center experienced a tremendous improvement after substantial renovations of existing facilities, as well as the opening of our new medical office building and chemotherapy infusion center. The family-friendly environment throughout our cancer treatment areas is designed to reduce the stress and anxiety associated with cancer care. Along these lines, additional pet therapy services have been added in an effort to reduce patient stress. Inpatient care has also been enhanced with updates to our computerized laboratory and radiology services, as well as upgrades to our Cancer Registry Education Plan. Lexington Medical Center has also recently



added advanced radioembolization therapy in our nuclear medicine facility to enhance our treatment of advanced cancers involving the liver.

I hope you share our pride and enthusiasm with these highlighted improvements, along with countless other advances in cancer treatment at Lexington Medical Center. We welcome your input and look forward to continuing to serve the health care needs of our community.

Patient Support Services

NURSE NAVIGATORS

Nurse navigators are oncology-trained nurses proficient in teaching patients about chemotherapy and what to expect while undergoing treatment. These nurses are selected for their interpersonal and problem-solving skills, and their ability to support patients and families. They perform a myriad of roles — teacher, champion, listener, counselor — to guide newly diagnosed cancer patients throughout their illness.

Lexington Medical Cancer Center currently employs seven board-certified nurse navigators: two navigators specifically assist breast cancer patients; three general cancer navigators; one lung cancer navigator; and one genitourinary navigator. Their wealth of knowledge enables patients and their families to anticipate and cope with any treatment side effects. There is no fee for navigator services, which are available through self-referral, or by physician, nursing or Pastoral Care referral.

- Kimberly Branham, RN, OCN: Breast Health Navigator
- Libby Daniels, RN, OCN: General Navigator
- Alice Green, BSN, OCN: General Navigator
- Kelly Jeffcoat, BSN, OCN, CBCN: Breast Health Navigator
- Lucretia Vaughn, BSN: Genitourinary Navigator
- Kerry Wise, BSN, OCN: Lung Cancer Navigator
- Deirdre Young, BSN, OCN: General Navigator



BECKY'S PLACE

Becky's Place, the only hospital-based appearance and resource center in the Midlands, has an updated look thanks to the support of the Lexington Medical Center Volunteer Auxiliary.

Since opening in 2000, Becky's Place has helped individuals throughout the Southeast minimize and manage changes in their appearance as a result of surgery and cancer treatment. Named in memory of Rebecca "Becky" Johnson, a hospital volunteer and Lexington Medical Center Foundation board member, the boutique is located on the Ground Floor of Lexington Medical Park 1 on the hospital's main campus.

Becky's Place offers a variety of head coverings, wigs and prosthetic garments, as well as a large selection of Vera Bradley handbags and accessories. And the boutique donates 10 percent of the net proceeds from Vera Bradley breast cancer awareness items to the Vera Bradley Foundation for Breast Cancer. In addition to offering a variety of products to help cancer patients through the changes in their

appearance, the staff has special training and certification through the American Board for Certification in Orthotics, Prosthetics and Pedorthics.

Accredited by The Joint Commission's Home Care Accreditation program, Becky's Place plays an important role in the recovery of individuals who have been diagnosed with and treated for cancer.

Helping cancer patients and survivors feel confident in their appearance

- Professional, certified breast prosthetics fitter
- Bras, camisoles, swimsuits and other specially made clothing
- Hats, scarves, wigs and head wraps
- Scarf-tying and head-wrap covering classes
- Non-metallic deodorants and skin care products



SUPPORT GROUPS AND PATIENT PROGRAMS

Support groups are an integral part of a patient's care plan at Lexington Medical Center. We strongly believe in the value of a therapeutic setting — a place where patients and caregivers can voice their fears and concerns and draw strength from the experiences of others. We provide a place of confidentiality for patients and privacy is paramount. Our support groups strive to provide an appropriate venue for people with all types of cancer.

Support Groups

CANCERCare

Free professional support for anyone affected by cancer. Visit CancerCare.org or call 1-800-813-HOPE (4673).

Living with Change

Weekly support group for families and caregivers to people with life-threatening illnesses.

Losing is Not an Option

Open to all adult cancer patients and their caretakers. Meets weekly.

Lymphedema Support Group

A monthly support group for people who experience lymphedema as a side effect of cancer treatment.

Sharing Hope

A support group for women living with metastatic breast cancer. A place for women to share fears and worries about their diagnosis and treatment.

Woman to Woman

A breast cancer support group that meets monthly.

Patient Programs

Beautiful You

Program to help women with cancer look and feel better. Free 90-minute class offers makeup application tips and advice from a licensed cosmetologist.

Wellness Workouts

A certified cancer exercise specialist leads this strength and exercise program specially designed to meet the needs of people recovering from cancer treatment.

Pet Therapy

Accompanied by certified trainers and handlers, pet therapy dogs offer therapeutic diversion and respite during inpatient visits.



QUALITY IMPROVEMENTS

Lexington Medical Center continues to grow and prosper as we add new services and technology to meet our goal of consistently delivering patient-centered care.

Implemented new educational pieces available for patients, including education on needle localization and fertility treatments for men and women.

Clinical Research

CLINICAL TRIALS IN 2019

Lexington Medical Center strives to provide collaborative care for its patients. Whether studies are housed in Radiation Oncology, Medical Oncology or Surgery, patients benefit from a diverse team of doctors, nurses, Cancer Registry staff and research personnel. This collaboration also extends into the community through the hospital's affiliation with Duke Cancer Center and our partnerships with local researchers.

Radiation Oncology

MA.39 Tailor RT: A Randomized Trial of Regional Radiotherapy in Biomarker Low Risk Node Positive Breast Cancer

Principal Investigator: Quillin Davis, MD

Medical Oncology

A171601: A Phase II Trial Assessing the Tolerability of Palbociclib In Combination with Letrozole or Fulvestrant in Patients Aged 70 And Older with Estrogen Receptor-Positive, HER2-Negative Metastatic Breast Cancer

Principal Investigator: Steven A. Madden, MD

S1418/BR006: A Randomized, Phase III Trial to Evaluate the Efficacy and Safety of MK-3475 (Pembrolizumab) as Adjuvant Therapy for Triple Receptor-Negative Breast Cancer with 1cm Residual Invasive Cancer or Positive Lymph Nodes (ypN+) After Neoadjuvant Chemotherapy

Principal Investigator: Steven A. Madden, MD

PATINA: A Randomized, Open Label, Phase III Trial to Evaluate the Efficacy and Safety of Palbociclib + Anti-HER2 Therapy + Endocrine Therapy vs. Anti-HER2 Therapy + Endocrine Therapy after Induction Treatment for Hormone Receptor Positive (HR+)/HER2-Positive Metastatic Breast Cancer

Principal Investigator: Steven A. Madden, MD

ABC Trial: A Randomized Phase III Double Blinded Placebo Controlled Trial of Aspirin as Adjuvant Therapy for Node Positive HER2 Negative Breast Cancer

Principal Investigator: Steven A. Madden, MD

A211601: Evaluation of Mammographic Breast Density Effect of Aspirin: A Companion Study to Alliance Study A011502

Principal Investigator: Steven A. Madden, MD

EA1131: A Randomized Phase III Post-Operative Trial of Platinum Based Chemotherapy vs. Observation in Patients with Residual Triple-Negative Basal-Like Breast Cancer Following Neoadjuvant Chemotherapy

Principal Investigator: Steven A. Madden, MD

Keylargo: A Single Arm, Phase II Study of Pembrolizumab, Oxaliplatin and Capecitabine in the First Line Treatment of Patients with Gastro-esophageal Cancer (KeyLARGO)

Principal Investigator: James Leroy Wells III, MD

Meet Our Physicians

RADIOLOGY



William P. Brehmer, MD



Wesley M. Cleaves, MD



Clarence S. Davis, MD



Michael M. Davis, MD



Jeanette Fulton, MD



Robert B. Garriss, MD



John W. Haynes, MD



David N. Knight, MD



Nicholas D. Mayes, MD



Joshua W. McCain, MD



Christopher T. McCarty, MD



Keith A. McGuire, MD



A. Alejandro Pertile, MD



Edwin P. Pia, MD



Beth M. Siroty-Smith, MD



Jonathan K. West, MD

ONCOLOGY



Quillin Davis, MD



Vijaya Korrapati, MD



Asheesh Lal, MD



Joshua D. Lawson, MD



Steven A. Madden, MD



Perrie Ryan, MD



Chelsea Rainwater Stillwell, MD



James Leroy Wells, MD

Meet Our Physicians

SURGERY



Marc C. Antonetti,
MD, FACS



E. Myron Barwick,
MD, FACS



Terence N. Chapman,
MD



Roland "Trey" Craft, III,
MD, FACS



Johnathan A. Engh,
MD, FAANS



Richard J.C. Felton,
MD, FACS



James D. Givens,
MD, FACS



Charles W. Harmon,
MD, FACS



S. Gray Hughes,
MD, FACS



Edward J. Jakubs,
MD



Todd Lefkowitz,
MD, FACS



Jeffrey S. Libbey,
MD, FACS



Nicholas A. Limperos,
MD



Ronald G. Myatich,
MD, FACS



Katherine T. Ostapoff,
MD



Glen F. Strickland,
MD, FACS



Richard C. Webb,
MD, FACS

Serving the Community

NAME OF ACTIVITY: Standard 4.1

Colorectal Cancer "Prep Party" and March Madness Prevention Event

Lexington Medical Center, in conjunction with Consultants in Gastroenterology, launched a coordinated awareness and prevention campaign for Colorectal Cancer Awareness Month in March.

Prep Party

On March 14, 2019, Lexington Medical Center and Consultants in Gastroenterology hosted a Rat Pack-themed "Prep Party" at Hotel Trundle, a hotel in downtown Columbia, South Carolina. This event included educational colorectal cancer prevention fact sheets provided by the Colon Cancer Prevention Network. They were available to all who attended and guests of the hotel. Gastroenterologists were available to speak with individuals attending the event. The lobby was decorated in blue with various educational stations. A news anchor for the local NBC affiliate televised the event every hour. Doing so reached a broad audience with facts on colorectal cancer prevention. Ten men had hotel rooms at

Hotel Trundle and received colonoscopy prep liquid. They then had colonoscopies at Consultants in Gastroenterology. Each participant received follow-up care and no positive findings.

March Madness Colorectal Cancer Awareness Campaign

To supplement the prevention event, Lexington Medical Center created an awareness campaign focused on early detection throughout the month. The hospital lit its medical park in blue for Colorectal Cancer Awareness Month. The governor and Columbia's mayor made proclamations during the month of March, local businesses hung window clings prominently in their windows and the water in Five Points fountain, a local

landmark, was dyed blue. This entire campaign won an American College of Gastroenterology SCOPY award, a service award aimed at spreading the message of the importance of colorectal cancer screening and prevention, in 2019.

Outcomes/Follow-Up Process

While a prevention event, Lexington Medical Center incorporated a screening component, which enabled 10 men over the age of 45 to receive colonoscopies. No positive findings were discovered. Fifty people attended the event.

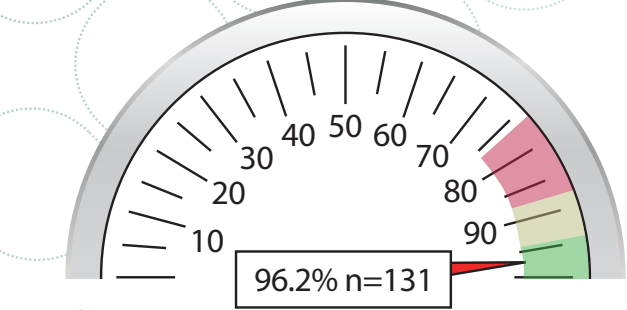
LEXINGTON MEDICAL CENTER ACCREDITATIONS



Statistics and Quality

2019 RQRS DASHBOARDS

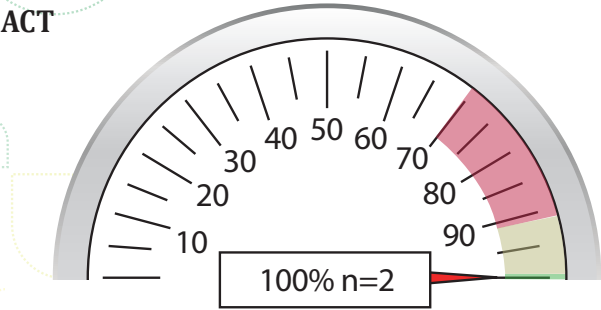
Breast Measures



Radiation therapy is administered within one year (365 days) of diagnosis for women under the age of 70 receiving breast conserving surgery for breast cancer.

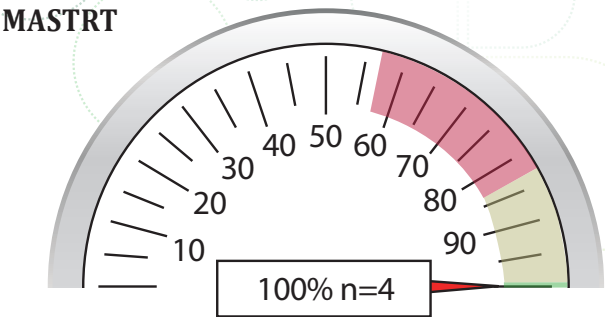
Colon Measures

ACT



Adjuvant chemotherapy is considered or administered with four months (120 days) of diagnosis for patients under the age of 80 with AJCC Stage III (lymph node positive) colon cancer.

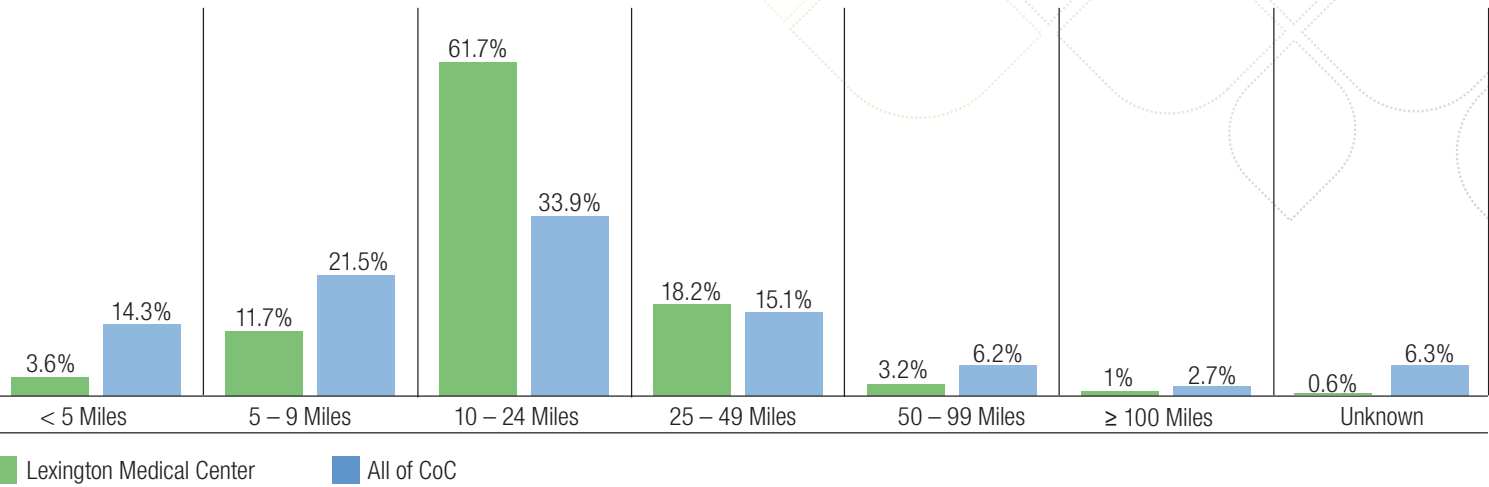
MASTRT



Radiation therapy is recommended or administered following any mastectomy within one year (365 days) of diagnosis of breast cancer for women with ≥ 4 positive regional lymph nodes.

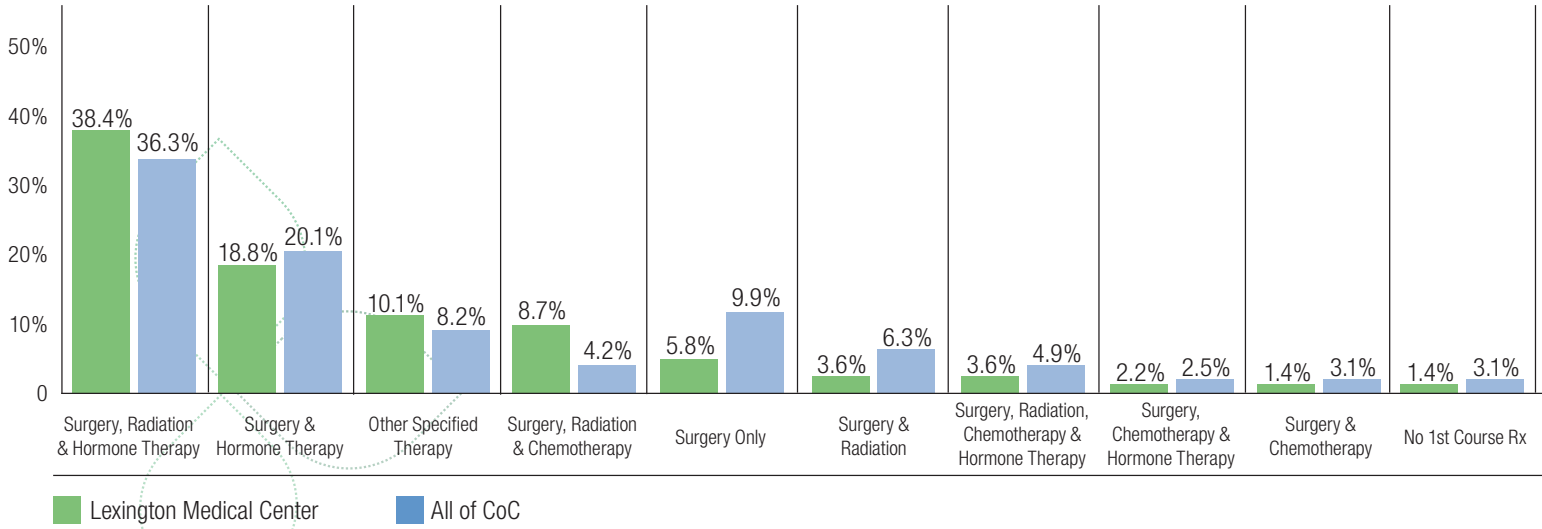
BREAST CANCER

Distance Traveled – Breast Cancer – Lexington Medical Center vs All Commission on Cancer 2016

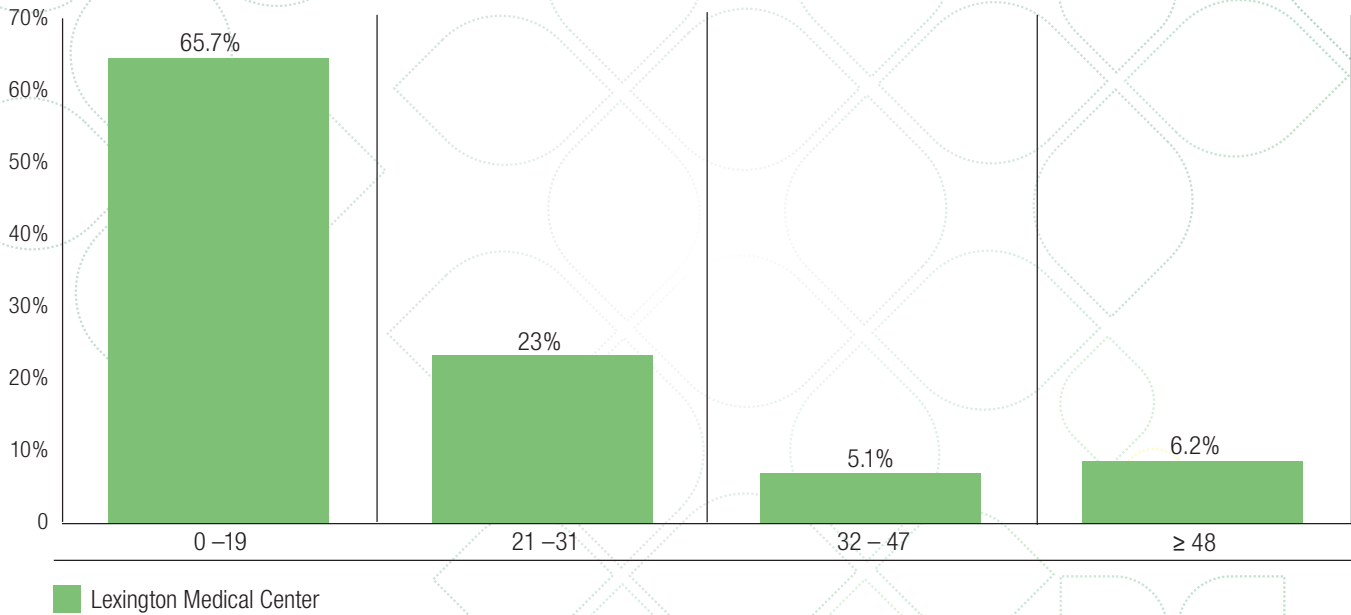


BREAST CANCER

First Course Treatment Stage I – Lexington Medical Center vs All Commission on Cancer 2016



Days to First Treatment Quartiles – Lexington Medical Center vs All Commission on Cancer 2016





Lexington Medical Cancer Center

DukeHealth AFFILIATE

2720 Sunset Boulevard
West Columbia, SC 29169
LexMed.com