

# Lexington Medical Center Nurse Practitioner Fellowship Program Overview | 2022-2023

---

# OBJECTIVES

- Provide an overview of Lexington Medical Center and the Nurse Practitioner Fellowship Program
- Review the application process for the 2022-2023 program year
- Provide contact information for individuals directly affiliated with the Fellowship Program



2021-2022 LMC Nurse Practitioner Fellows

# LEXINGTON MEDICAL CENTER ORGANIZATIONAL STRUCTURE



# MISSION, VISION, AND VALUES

## Our Mission

- To provide quality health services that meets the needs of our community.

## Our Vision

- A coordinated health care delivery system that is accessible and affordable and that continually improves the health status of our community.

## Our Values

- Quality
- Compassion
- Responsibility
- Integrity
- Working with others to serve a common goal

# FACILITY LOCATIONS

## Main campus

557 bed modern medical complex centrally located in Midlands market and close to three major interstates

## Physician Network

81 practice locations within Lexington and Richland Counties

## Medical Parks

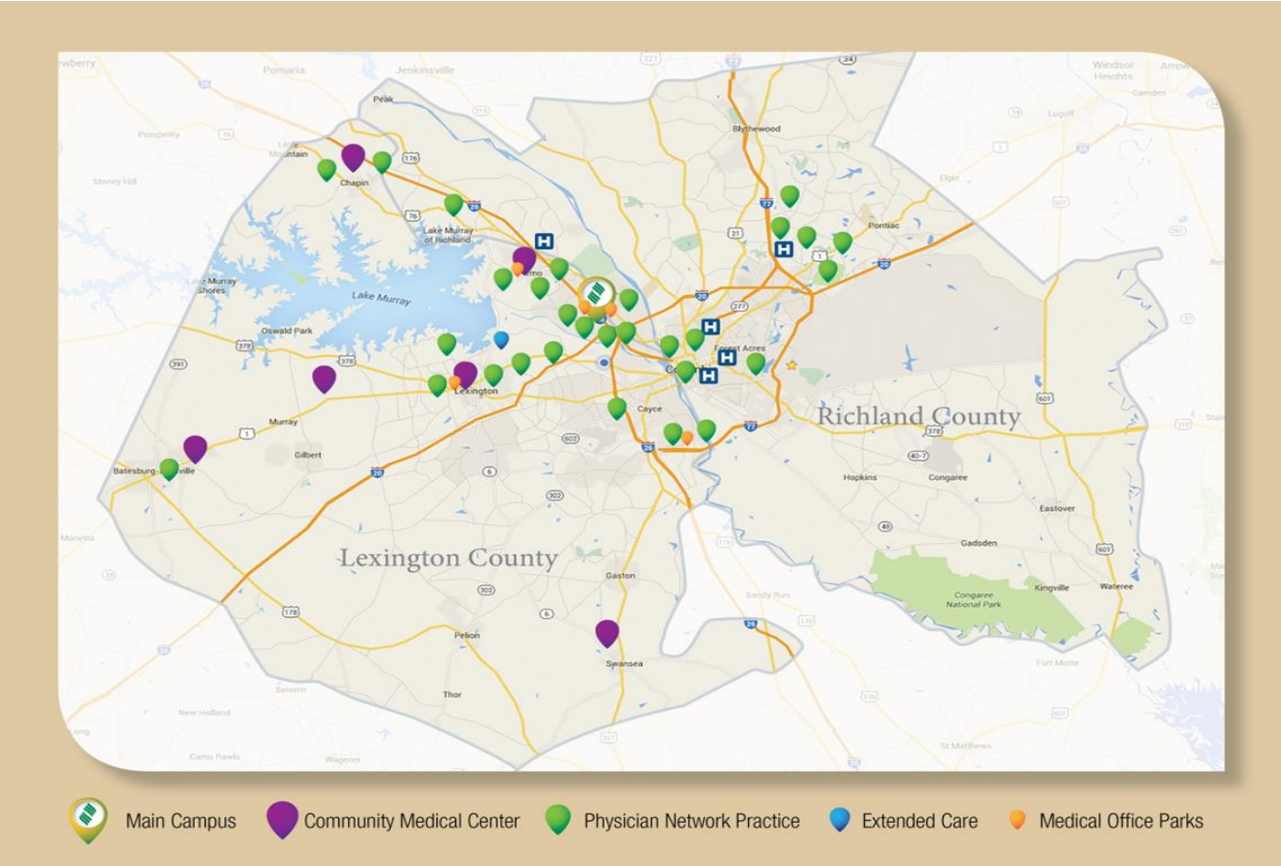
LMP 1, LMP 2, LMP 3, Otarre Pointe, Lexington, Irmo, and Northeast

## Community Medical Centers

5 sites strategically located throughout Lexington County

## LMC Extended Care

Largest nursing home in the Carolinas



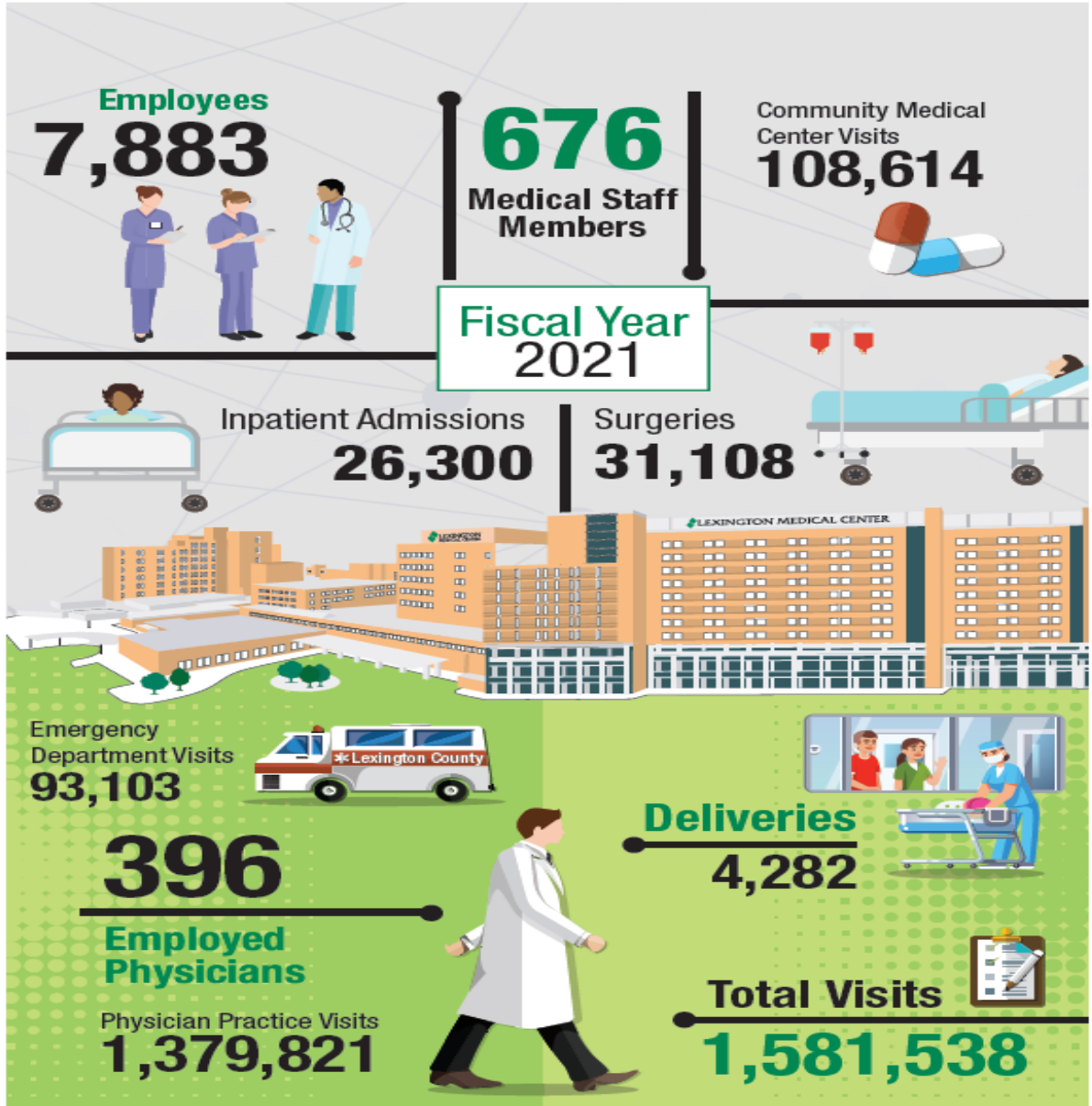
# Facility Locations

## 398 Physicians in 79 Locations

74	Family Practice	1	Physiatry
29	Internal Medicine	4	Occupational Health
1	Geriatrics	7	Oncology
41	Ob/Gyn	13	Orthopaedics
7	Pediatrics	1	Plastic Surgery
29	Urgent Care	4	Podiatry
5	Endocrinology	7	Pulmonology
3	ENT	2	Radiation Oncology
16	General Surgery	6	Rheumatology
19	Cardiology	1	Urogynecology
3	Cardiothoracic Surgery	6	Urology
4	Vascular Surgery	18	Anesthesiology
3	Infectious Disease	8	Critical Care
1	Maternal-Fetal Medicine	36	Emergency Medicine
3	Neurology	34	Hospitalists
5	Neurosurgery	4	Psychiatry
3	Pain Management		

179 Advanced Practice Providers





# FISCAL YEAR 2021

## QUANTIFYING OUR IMPACT

# PROGRAM OBJECTIVES

- Provide quality health services that meet the needs of our community
- Meet the demand for access to high quality healthcare with well-trained, confident Nurse Practitioners
- Increase the clinical skills, confidence, productivity, and job satisfaction of new Nurse Practitioners, as well as contribute to employer satisfaction and workforce retention
- Retain Nurse Practitioners, who are committed to developing careers within Lexington Medical Center Physician Network



# PROGRAM OVERVIEW

- Structured, one-year program
- Support new Nurse Practitioners through providing the depth, breadth, volume and intensity of clinical training necessary to the clinical complexity of the practice of medicine
- Provide advanced training through practical hands-on and didactic educational experiences
- Provide primary placement within LMC practices, “specialty” shadowing experiences, and weekly didactic education opportunities
- Cultivate mentorship opportunities with current LMC medical staff

# CONTINUITY OF CARE TRAINING

- Fellows complete the program within LMC Physician Network practices.
- Placements are the foundation of the fellowship.
  - 1-2 rotations, each lasting 6-12 months
- Fellows will work closely with their preceptors to assess appropriate number of patients seen per day and will gradually increase their caseload throughout the year
- Example caseloads by program weeks:
  - Weeks 01 – 02: Observe Physician
  - Weeks 02 – 20: 10 patients per day
  - Weeks 20 – 36: 12 patients per day
  - Weeks 36 – 52: 15+ patients per day

\*Will be based on specialty. Volumes above are examples for family medicine.



# EXPECTATIONS – PRIMARY ROTATIONS

Under the supervision of a Physician, fellows will develop their own patient panel;

- Assess the physical and psychosocial status of patients by means of interview, health history, physical examination, and diagnostic tests and
- Interpret data, develop and implement a plan of treatment, follow through on a continuum of patient care across the health-illness continuum and lifespan within standard protocols set forth and approved by both the nurse practitioner and practice physicians.



# EXPECTATIONS – SPECIALTY SHADOW EXPERIENCES

Shadow experiences are designed to enhance the coordination of care, build relationships and learn pathways for referral processes.

NP Fellows will not be privileged or credentialed for each specialty.

Examples are:

- Cardiology
- Pulmonary
- Endocrinology
- Radiology
- Rheumatology
- Orthopedics
- Gynecology
- Emergency/Urgent Care
- Rural Health
- Neurology
- Pediatrics
- Gastroenterology\*

\*A partnership with non-network physician practices may be arranged for exposure to specialties outside of the LMC network

# DIDACTIC EDUCATION SESSIONS

- Two hours per week are dedicated to formal learning sessions and problem solving on a variety of complex clinical challenges that correspond to the fellow's current clinical experiences
  - Examine case studies
  - Journal articles
  - Book discussions
  - Discussion of recent patient encounters
  - Hands-on learning



# ADDITIONAL EDUCATIONAL OPPORTUNITIES

- LMC Primary Care Opportunities
  - LMC Batesburg-Leesville and LMC Swansea Primary Care facilities promote access to healthcare services for rural communities
  - Weekend shifts are available as an additional opportunity to learn and work with patients in a primary care setting
- Community events (i.e. health fairs, school sports physicals, and free clinics)
- Continuous training on areas including but not limited to:
  - Access, Continuity, Planned care, Team-based, Prevention focused, Use of electronic technology, Patient Centered Medical Home, Population Health

# 2022-2023 PROGRAM TIMELINE

- Applications open on **January 1, 2022**
- All required application documents including the video interview are due by **March 1, 2022**
- Select candidates will be scheduled for on-site interviews in **March 2022**
- 2022-2023 NP Fellows will be notified of selection by **April 2022**
- Program start date in **August 2022**
- Program end date **August 2023**

# APPLICANT QUALIFICATIONS

- Recent completion of a master or doctoral degree in nursing from an accredited college or university
- Students currently in school must graduate by May 2022
- Licensure in South Carolina as an advanced practice registered nurse obtained by August 2022
- At least two years full-time nursing practice or equivalent experience in providing direct patient care within the previous five years



# APPLICATION PROCESS

1. Complete the [online application](#) to apply by March 1, 2021. Late applications will not be considered.
2. **As part of the application process**, please upload the following supportive documents when applying:
  - Curriculum vitae
  - Transcripts of all completed or in process course work (graduate and undergraduate). Unofficial transcripts will be accepted.
  - Three (3) letters of recommendation
3. **Complete the video interview process**: Selected candidates will receive an email link to complete an online video interview to be eligible for the next round consideration
4. Selected candidates will be scheduled for onsite interviews in April 2022.

# PROGRAM CONTACTS

## **Julie Nelson**

Physician Network Student Coordinator  
(Fellowship Program Coordinator)

Office | 803-936-3150

Email | [NPFellowship@lexhealth.org](mailto:NPFellowship@lexhealth.org)

## **Marquita Gaines**

Human Resources Workforce Development Coordinator

Office | 803-739-3622

## **Robert Callis, M.D.**

Physician Network Medical Director

## **Kate Zannella, Ed.S.**

Physician Network Operational Support,  
Education, and Development Director

