



# **Chlorhexidine Gluconate Baths (CHG Baths) for Patients with Central Lines**

**New Process for Patients with Central Lines**

**Effective: December 2, 2014**

# Objectives



- The nurse will be able to:
  - Identify the impact of CHG bathing
  - Identify the steps taken in giving a patient a CHG bath
  - Use the decision tree to identify those patients that should not receive CHG baths
  - Discuss documentation necessary for CHG baths

# Why Utilize CHG Baths?



- **Studies show daily baths with CHG cloths reduce central line infections.**
  - Daily patient bathing reduces risk of blood stream infections (BSIs) including bacteremia and fungemia
  - Daily patient bathing reduces risk of acquisition of MDROs (multi-drug resistant organisms)

# Why Utilize CHG Baths?



- There are no serious skin reactions reported with the use of CHG bathing.
- This intervention is relatively straight forward to implement and sustain. It does not require a substantial change from routine patient-bathing practices.
- There are cost savings associated with avoidance of health care acquired infections.
- The potential to improve patient satisfaction. Patients appreciate knowing we are utilizing interventions to keep them safe from infections.

# Why Use the 2% CHG Cloths?



- The persistence of CHG on the skin allows prolonged and cumulative antibacterial effect.
  - A 2% CHG impregnated alcohol-free no-rinse cloth used for pre-surgical skin preparation is associated with excellent rapid reductions of bacterial counts.
- The 2% no-rinse cloth appears to be more effective at reducing skin colonization than a 4% CHG solution that must be rinsed off.

# Why Use the 2% CHG Cloths?



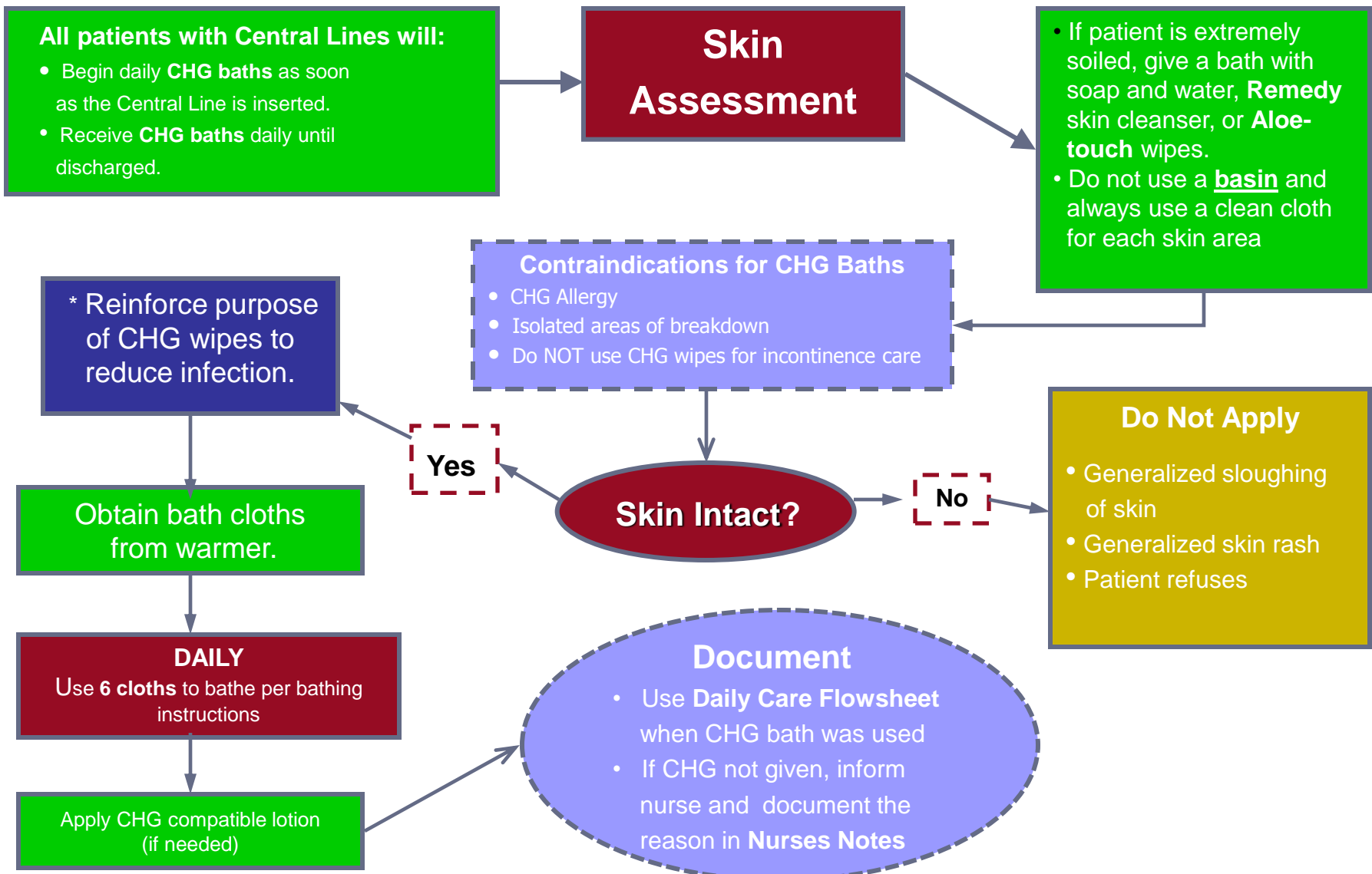
- The no-rinse nature of the CHG cloth may result in greater CHG residual on the skin.
- The exfoliative nature of the CHG cloth may improve its performance.
- A 2% CHG no-rinse cloth protocol helps to ensure patient compliance as opposed to undocumented patient showering with chlorhexidine at home.

# CHG Bathing Process



- All inpatients with Central Lines will begin daily CHG baths as soon as the Central Line is inserted or on admission if Central Line is already present.
- If patient desires and is able per MD order:
  - Following the shower, the nurse/nurse tech will bathe patient with CHG impregnated cloths.
  - The **nurse/nurse tech will give ALL CHG baths** to ensure proper prep of patient.
  - It is recommended that the patient does not shower once the CHG baths have begun.
  - The cumulative effect of CHG baths on the skin provides the best benefit.

# CHG Bathing Decision Tree





# CHG Bathing

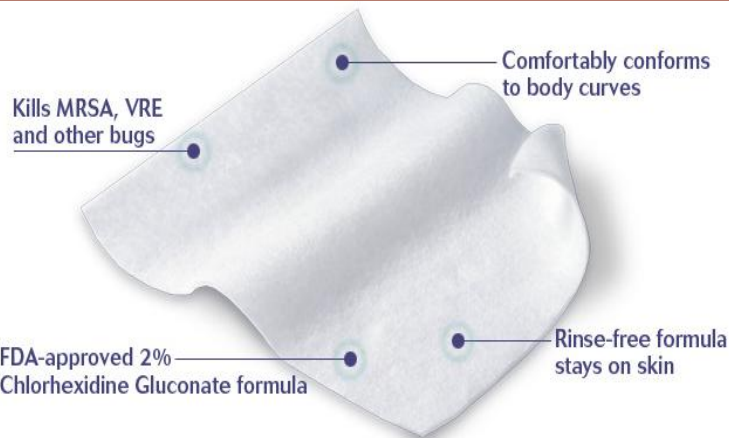


- If a patient can not have a CHG bath because of skin breakdown, allergy, etc., then an alternative bathing method must be used.
- **Never** use a **basin** to give a patient a bath
- **Never** use the **sink** to give a patient a bath
- If a patient refuses the CHG bath, this must be documented under daily hygiene in the comment section.

# CHG Bath Wipes



- CHG Bath Wipes come prepackaged in a single packet that contains three individual packets.
- Each individual packet contains 2 CHG impregnated wipes.
- CHG wipes will be warmed using the CHG warming cabinet (next slide).



# New CHG Warming Cabinet



**NO MORE GUESSING WHICH PACKAGES ARE WARM AND READY FOR USE.**

Each package is warmed to a consistent, reliable temperature. Lighted indicators automatically show which packages are warm and ready, and which ones are not.

- Warm CHG bath pack at least 1 hour prior to use
  - Place CHG pack in warmer once you are aware you need to bathe a patient.
  - Do not pre-stock cabinet due to short window of CHG viability once warmed.
  - Packets are only good for 72 hours once warmed.

# New CHG Warming Cabinet



 NOT READY

 READY  
TAKE FIRST

 DISPOSE

**NO MORE GUESSING WHICH  
PACKAGES ARE WARM AND  
READY FOR USE.**

Each package is warmed to a consistent, reliable temperature. Lighted indicators automatically show which packages are warm and ready, and which ones are not.

## Light Indicators

### Yellow Light

- ◆ Cloth is warming, not yet ready.

### Solid Green Light

- ◆ Cloth is ready to use.

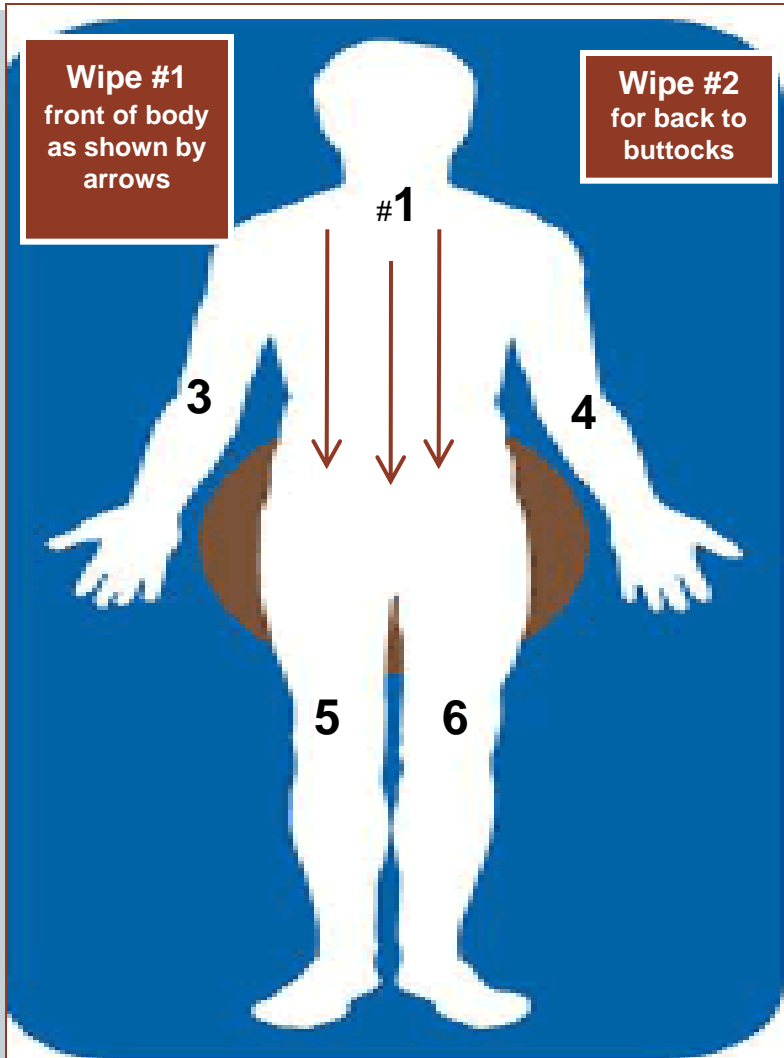
### Blinking Green Light

- ◆ Cloth is aging out, use this one first.

### Red light

- ◆ Cloth is expired, do not use, dispose of it.

# CHG Bath Instructions



- Use one wipe each (6 total)
  1. To clean neck, chest, abdomen & groin
  2. To clean back and buttocks
  3. To clean left arm
  4. To clean right arm
  5. To clean left leg
  6. To clean right leg
- ★ Do not wash face or perineal area with CHG wipes.
- ★ Do not use CHG on mucous membranes or severely abraded skin.

# For Patients with Central Lines



## ★ Important to Remember

- For patients with Central Lines, once an area has been cleansed with CHG cloth, DO NOT return to the same area.
- For heavily soiled skin, face and perineal area:
  - Use soap & water, *Aloetouch* cleansing cloths, or *Remedy* foaming body cleanser or
  - Patient may shower **PRIOR** to beginning CHG Baths.
- If lotion is desired, use only Kindest Kare Skin Cream (a CHG compatible lotion).
- Document CHG Bath

# REMEMBER



**Do Not Flush The CHG Wipes in the Toilet**

Dispose of each  
washcloth in the trash.



Do **NOT** flush  
washcloths in the toilet.



# REMEMBER:

## All CHG baths should be documented in EPIC.

**Doc Flowsheets**

File Add Rows Add LDA Cascade Add Col Insert Col Show Device Data Last Filed Reg Doc Refresh Legend Cosign Link Lines

VS Complex Complex Assessment Intake/Output IV Assessment **Daily Cares/Safety** Vaccination Screening Post-Cath

Admission (Current) from 5/5/2014 in LMC MICU

	5/6/14	5/7/14
1600	1700	1800
1930	2000	1000

**Hygiene Row**

**Selection Form**

- Bathed
- Shower
- CHG bath**
- Back rub
- Foley care
- Peri care
- Incontinence care
- Hair washed

**Select CHG Bath**

**First Filed Value**

CHG bath; Peri care  
by Eichelberger, Kimberly W, RN at 05/05/14 1821